

# Fact Book



Delaware College of Art and Design  
600 N Market St, Wilmington, DE 19801

---

Fall 2019

Prepared by Office of the President and Office of the Registrar

## CONTENTS

INTRODUCTION .....	1
IPEDS - DCAD Peer and Aspirational Institutions.....	1
DCAD Peer Institutions, IPEDS .....	1
DCAD Aspirational Institutions, IPEDS .....	1
STUDENT SUCCESS QUICK FACTS.....	2
INSTITUTIONAL HEALTH BENCHMARK .....	3
College Scorecard .....	3
College Scorecard Highlights, September 28, 2018.....	4
Institutional Health, IPEDS and DCAD Comparison* .....	5
Federal Composite Score* .....	6
Key Performance Indicators .....	7
ADMISSIONS .....	8
Admissions Yield .....	8
Fall IPEDS Peer Institutions' Admission Yield.....	9
ENROLLMENT DATA.....	10
Unduplicated Head Count .....	10
Full- and Part-time Enrollment Status .....	10
Enrollment by Location.....	11
Enrollment by Race/Ethnicity .....	11
Enrollment by Gender .....	12
Enrollment by Age .....	12
Commuter vs. Residential Enrollment by First-Year/Second-Year .....	13
Resident vs. Commuter Enrollment.....	13
PERSISTENCE AND GRADUATION RATES .....	14
Fall Cohort Enrollment, Dropout Rates and Graduation Rates.....	14
IPEDS First-to-Second Year Retention Rates* .....	15
IPEDS Overall Graduation Rate by Race/Ethnicity* .....	16
IPEDS Graduation Rates, by Time of Completion* .....	16
IPEDS, National 2YR Graduation Rate Comparison .....	16
Graduation Rate for Pell, Other Need-based Aid, and Non-aid Recipients .....	17
Pell Cohort, Gender* .....	17
Graduation Rate Pell Cohort, Ethnicity.....	18
Graduation Rate First Generation Students* .....	19
Degrees by Program .....	20
TRANSFER .....	21
DCAD Top 10 Transfer Institutions .....	21
TUITION AND FEES.....	22
Tuition and Fees, per Semester .....	22
Tuition and Fees for First-Time, Full-Time for Peer Institutions* .....	22

FINANCIAL AID .....	24
IPEDS Pell Grant .....	24
IPEDS Institutional Aid .....	25
"0" Expected Family Contribution (EFC) .....	26
Financial Aid Awards.....	26
"0" EFC, Academic Status .....	27
3 Year Cohort Default Rate.....	27
DCAD Cost of Attendance .....	29
Institutional Aid % of Tuition .....	29
EMPLOYEES.....	30
Faculty Academic Credentials.....	30
Employees.....	30
CONTINUING EDUCATION .....	31
CE Enrollment .....	31
CE Converted .....	31
DEVELOPMENT .....	32
Development Revenues.....	32

## INTRODUCTION

The Office of the President and the Registrar prepared the 2019 DCAD Fact Book. In addition to longitudinal data, this Fact Book includes benchmark data using IPEDS to identify DCAD's peer (size and programs) and aspirational schools (programs).

### **IPEDS - DCAD Peer and Aspirational Institutions**

#### **DCAD Peer Institutions, IPEDS**

Art Academy of Cincinnati  
Cleveland Institute of Art  
Maine College of Art  
Memphis College of Art  
Moore College of Art and Design  
Pacific Northwest College of Art  
Pennsylvania Academy of the Fine Arts  
Pennsylvania College of Art and Design  
Watkins College of Art, Design & Film

#### **DCAD Competitor Institutions, IPEDS**

Delaware County Community College (Media, PA)  
Delaware Technical Community College, Terry Campus (Dover, DE)  
Maryland Institute College of Art (Baltimore, MD)  
Moore College of Art and Design (Philadelphia, PA)  
Pennsylvania College of Art and Design (Lancaster, PA)  
Savannah College of Art and Design (Savannah, GA)  
University of the Arts (Philadelphia, PA)  
University of Delaware (Newark, DE)

## STUDENT SUCCESS QUICK FACTS

Compared four-year Art and Design schools:

- 90% of DCAD students return after their first year, compared to 80%, the average of 4-year art and design schools.
- DCAD's graduation rate is 69% compared to 52%, the average of 4-year art and design schools. DCAD's graduation rate is above the national average for both 2- and 4-year colleges.
- DCAD graduates who transfer to a 4-year art and design school have a significantly higher graduation rate than those students who began their studies at the 4-year art and design school; 87% compared to 57% at one of DCAD's top transfer schools.
- On average, for those students who borrow from the federal government, DCAD's median borrowing rate, per month is \$90 less than the average of 4-year art and design schools. (Reported by U.S. Department of Education - DCAD \$208 vs. \$298 average of art and design schools)
- DCAD's graduation rate for first-generation students is 60%, compared to 27% for four – year colleges

## INSTITUTIONAL HEALTH BENCHMARK

### College Scorecard

Peer Schools 2016-2017	Enrollment UGDS	College Affordability and Transparency Center, 9/28/2018 ( <a href="https://collegecost.ed.gov/catc/">https://collegecost.ed.gov/catc/</a> )				
		Costs 2017-2018	Graduation Rate	Loan Default Rate National 11.5%	Median Borrowing	Median Monthly Repayment
<b>Low, Medium, High</b>						
Delaware College of Art and Design	170	<b>\$29,268 (H)</b>	<b>66.0% (H)</b>	11.8%	<b>\$12,000</b>	<b>\$128</b>
Art Academy of Cincinnati	201	<b>\$24,336 (M)</b>	<b>53.1% (M)</b>	9.30%	<b>\$ 27,000 (H)</b>	<b>\$287</b>
Cleveland Institute of Art	613	<b>\$29,243 (H)</b>	<b>65.0% (H)</b>	5.10%	<b>\$27,250 (H)</b>	<b>\$290</b>
Maine College of Art	448	<b>\$30,796 (H)</b>	<b>61.0% (M)</b>	10.50%	<b>\$27,000 (M)</b>	<b>\$287</b>
Memphis College of Art	337	<b>\$21,865 (M)</b>	<b>53.0% (M)</b>	15.20%	<b>\$31,000 (H)</b>	<b>\$330</b>
Moore College of Art and Design	368	<b>\$25,453 (H)</b>	<b>63.0% (M)</b>	8.60%	<b>\$27,000 (H)</b>	<b>\$287</b>
Pacific Northwest College of Art	397	<b>\$35,439 (H)</b>	<b>29.0% (L)</b>	6.90%	<b>\$27,000 (H)</b>	<b>\$287</b>
Pennsylvania Academy of the Fine Arts	191	<b>\$36,058 (H)</b>	<b>57.0% (H)</b>	1.80%	<b>\$27,000 (H)</b>	<b>\$287</b>
Pennsylvania College of Art and Design	232	<b>\$24,266 (H)</b>	<b>44.0% (M)</b>	7.5%	<b>\$27,000 (M)</b>	<b>\$287</b>
Watkins College of Art, Design & Film	243	<b>\$29,842 (H)</b>	<b>26.0% (L)</b>	9.40%	<b>\$28,480 (M)</b>	<b>\$303</b>

Aspirational 2017-2018	Enrollment UGDS	College Affordability and Transparency Center				
		Costs 2017-18 (All High)	Graduation Rate (All High)	Loan Default Rate National 11.5%	Median Borrowing	Median Monthly Repayment
Delaware College of Art and Design	170	<b>\$29,268</b>	<b>66.0%</b>	11.8%	<b>\$12,000</b>	<b>\$128.00</b>
					<b>(All high)</b>	
California College of the Arts	1516	<b>\$31,958</b>	<b>60.0%</b>	4.0%	<b>\$ 27,000</b>	<b>\$287</b>
Maryland Institute College of Art	1724	<b>\$38,861</b>	<b>73.0%</b>	4.10%	<b>\$ 27,000</b>	<b>\$287</b>
Pratt Institute	3445	<b>\$45,488</b>	<b>67.0%</b>	3.6%	<b>\$ 26,000</b>	<b>\$276</b>
Savannah College of Art and Design	9931	<b>\$39,690</b>	<b>67.0%</b>	4.80%	<b>\$ 26,375</b>	<b>\$280</b>
School of Visual Arts	3602	<b>\$40,091</b>	<b>66.0%</b>	4.10%	<b>\$ 27,000</b>	<b>\$287</b>
The New School	7007	<b>\$36,702</b>	<b>66.0%</b>	5.7%	<b>\$ 24,527</b>	<b>\$261</b>
The University of the Arts	1693	<b>\$32,778</b>	<b>63%</b>	9.7%	<b>\$ 27,000</b>	<b>\$287</b>
Rhode Island School of Design	1999	<b>\$43,457</b>	<b>89.0%</b>	2.10%	<b>\$ 27,000</b>	<b>\$287</b>

Source: IPEDS

Costs: Net price after grants and scholarships, financial aid you do not have to pay back are subtracted from the institution's cost of attendance.

Graduation Rate - Cohort begin fall 2010 (150%)

Loan Default Rate: Entered repayment on certain Federal student loans in the federal fiscal year 2011 (between October 1, 2010 and September 30, 2011) and who defaulted before September 30, 2013

Median Borrowing; All undergraduate July 1, 2012, and June 30, 2013.

## College Scorecard Highlights, September 28, 2018

### 1. Costs

- Average Annual Cost (net price after aid from school, state, or federal government)
  - ✓ DCAD \$ \$30,369
  - ✓ National Average \$16,813

### 2. Financial Aid & Debt (2010 and 2011 repayment cohorts)

- Students receiving federal loans ( excludes Parents PLUS)
  - ✓ DCAD 80%
- Typical Total Debt (median federal debt of undergraduate borrowers who completed. This includes only federal loans; it excludes private student loans and Parent PLUS loans)
  - ✓ DCAD \$12,000 (same)
- Students paying down their debt (The share of students who have repaid at least \$1 of the principal balance on federal loans within 3 years of leaving school)
  - ✓ DCAD 67%
  - ✓ National Average 68%
- Typical Monthly Loan ( median monthly loan payment for students who completed, if it were repaid over 10 years at 6% interest rate)
  - ✓ DCAD \$133/month

### 3. Graduation & Retention

- Graduation (after 4 years, 200%)
  - ✓ DCAD 61.36%
  - ✓ National Average 63%
- Students who return after their first year ( fall to fall)
  - ✓ DCAD 74%
  - ✓ National Average 67%

### 4. Earnings After School (median earning of former students who received federal financial aid, at 10 years after entering the school)

- ✓ DCAD no data
- ✓ Pratt \$43,400 (Annual Cost \$ \$43,068)
- ✓ RISDI \$51,100 (Annual Costs \$39,777)

### 5. Socio-Economic Diversity

- ✓ 59% of DCAD students have family income less than 40K and receive PELL Grant

NB: Data is from the September 28, 2018 College Scorecard. Data represents information culled from students who receive federal financial aid; data from 2010-2012.

## Institutional Health, IPEDS and DCAD Comparison\*

Institutional Health IPEDS Survey Year  Strategic Plan: Goal # (SP:G)	FY13 DCAD	FY13* IPEDS Peer	FY14 DCAD	FY14* IPEDS Peer	FY15 DCAD	FY15* IPEDS Peer	FY16 DCA D	FY16* IPEDS Peer	FY17 DCAD	FY17 IPEDS Peer
<b>Revenue Sources % (IPEDS)</b>										
Tuition and fees	66% ↓	73%	76% ↑	61%	65% ↓	73%	72% ↓	76%	72% ↑	71%
Government grants and contracts	11% ↓	2%	10% ↓	2%	8% ↑	2%	10% ↑	3%	11% ↑	3%
Private gifts, grants, and contracts	11% ↑	12%	4% ↓	15%	17% ↑	16%	6% ↓	12%	5%	13%
Investment Return	0	7%	0	7%	0	2%	0	0	0	10%
Other core revenues	12% ↑	2%	10% ↓	1%	9%	2%	12% ↑	1%	12%	2%
<b>Revenue Expenditures by function % (IPEDS)</b>										
Academic Support (SP G4.1)	8% ↓	10%	9% ↓	11%	9% ↓	10%	9% ↓	10%	8%	10%
Institutional Support (SP G4.1)	23% ↓	30%	23% -	31%	23% ↓	33%	24% ↓	35%	23%	37%
Instruction (SP G4.1)	27% ↓	45%	24% ↓	39%	25% ↓	38%	23% ↓	37%	26%	40%
Student Services Support (SP G4.1)	21% ↓	13%	22% ↓	15%	21% ↑	17%	22% ↑	17%	19%	10%
Other core expenses (SP G4.1)	20% ↑	0%	22% ↑	0	22% ↑	3%	22% ↑	3%	24%	0%
<b>Ratio of full-time students to full-time faculty</b>										
	11:1	8:1	12.1	9:1	13:1	9:1	10:1	9:1	8:1	9.1

\*IPEDS Benchmark Peer Comparison



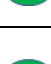
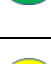



### Federal Composite Score\*

FY16	FY15	FY14	FY13	FY12	FY11
2.2	2.5	2.3	2.8	3.0	3.0

\*Federal Financial-Responsibility Test: Composite score reflects the overall financial health of institutions along a scale from negative 1.0 to positive 3.0. A score greater than or equal to 1.5 indicates the institution is considered financially responsible. Schools with scores of less than 1.5 but greater than or equal to 1.0 are considered financially responsible, but require additional oversight

## Key Performance Indicators

	2017-2018	2016-2017	2015-2016	2014-2015	2013-2014	2012-2013	2011-2012		Strategic Plan	Mission
Student Engagement (CCSSE 2012 cohort)								Active and Collaborative Learning	Goal 1.2	1, 2, 3
								Student Effort	Goal 1.2	1, 2, 3
								Academic Challenge	Goal 1.2	1, 2, 3
								Student-Faculty Interaction	Goal 1.2	1, 2, 3
								Support for Learners	Goal 1.2	1, 2, 3
Admissions	33%	35%	38%	40%	37%	34%	43%	Yield Rate	Goal 1.2	1, 2, 3
	10%	7%	6%	13%	10%	13%		Conversation Rate		1, 2, 3
Campus Enrollment	147	175	166	195	200	232	261	Enrollment	Goal 1.2	1, 2, 3
Retention	89%	75%	85%	75%	78%	61%	68%	Retention fall to fall	Goal 1.2	1, 2, 3
Persistence	89%	90%	96%	91%	95%	82%		Persistence fall to spring		1, 2, 3
Graduation and Transfer Rate		71%	60%	62%	70%	69%	55%	Graduation Rate (IPEDS)	Goal 1.3	1, 2, 3
		66%	60%	71%	69%	47%	66%	Transfer Rate (Clearinghouse)	Goal 1.3	1, 2, 3
Developmental Success			50%	60%	72%	64%	77%	Success in next credit course	Goal 2.4	1, 2, 3

Change from the previous year: Higher Lower

## ADMISSIONS

### 2013 – 2018 Admissions Yield

	2013	2014	2015	2016*	2017	2018
Applicants	448	462	266	331	332	210
Offered (Admits 2015)	259	222	195	271	191	152
Accepted/Confirmed	98	90	73	96	63	70
Ratio offers/total applicants	0.58	0.48	0.73	.82	.58	.75
Ratio of accepts to offers (Yield)	0.38	0.40	0.38	.35	.33	.45

Reflects submitted applicants per Radius

### 2013 – 2018 Admissions Funnel

Cohort	Inquiries	Conversion Rate	Apps	Completion Rate	Completed Apps	Admit Rate	Admits	Deposit Rate	Net Deposits
2018	1854	1.9%	210	75%	157	75%	152	45%	70
2017	3124	10%	332	58%	191	92%	177	36%	63
2016	4537	7%	331	82%	271	98%	265	36%	96
2015	4451	6%	266	81%	215	91%	195	37%	73
2014	3658	13%	462	57%	262	85%	222	41%	90
2013	4665	10%	448	65%	293	88%	259	38%	98

### 2017-2018 Enrollment Stage

Enrollment Stage	2018	2017	Number + or -	Percent Change
Inquires	1854	3124	-1270	-68.50%
Applicants	210	332	-122	-58.10%
Completed Applications	157	191	-34	-21.66%
Admits	152	177	-25	-16.45%
Net Deposits	70	63	7	10%

**2016 – 2018 Fall IPEDS Peer Institutions' Admission Yield**

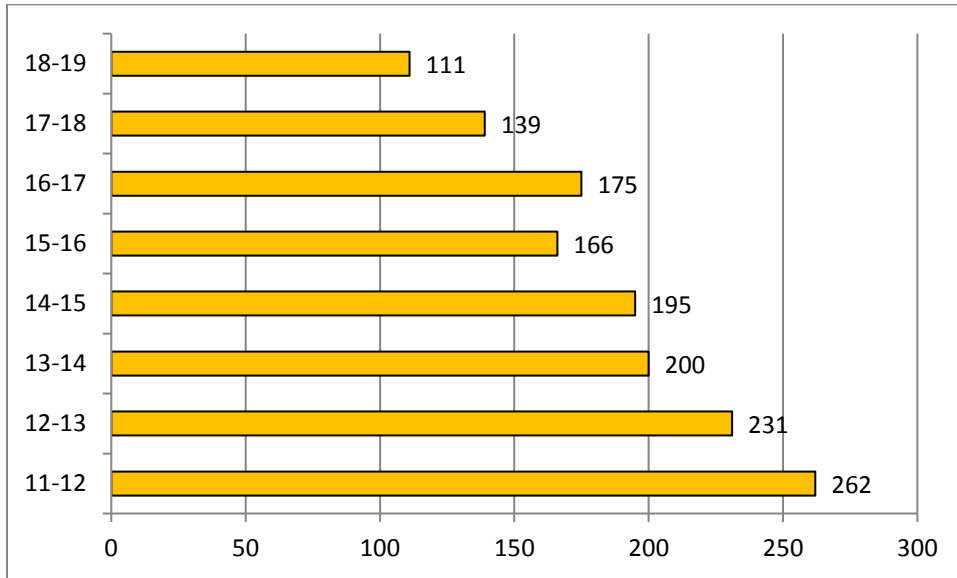
Institution Name	2017-18		2016-17		YIELD 2017	YIELD 2016
	Admit	Enroll	Admit	Enroll		
Art Academy of Cincinnati	214	34	211	51	16%	24%
Cleveland Institute of Art	519	154	523	157	30%	30%
<b>Delaware College of Art and Design</b>	<b>158</b>	<b>55</b>	<b>258</b>	<b>89</b>	<b>35%</b>	<b>34%</b>
Maine College of Art	504	121	457	128	24%	28%
Memphis College of Art	154	47	152	77	31%	50%
Moore College of Art and Design	432	89	312	71	21%	23%
Pacific Northwest College of Art	396	82	293	81	21%	28%
Pennsylvania Academy of the Fine Arts	165	38	158	38	23%	24%
Pennsylvania College of Art and Design	172	72	187	75	42%	40%
School of the Museum of Fine Arts-Boston	Blank	Blank	258	40	Blank	15%
Watkins College of Art Design & Film	99	30	97	43	30%	44%

**2015-2017 Fall IPEDS Competitor Institutions' Admission Yield**

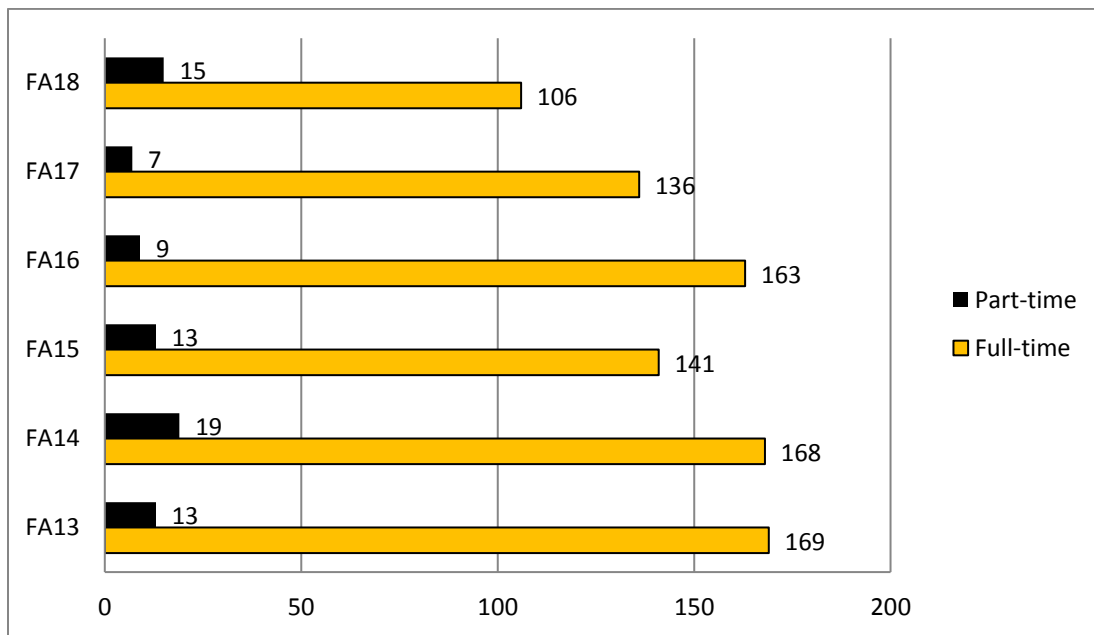
Institution Name	2017-18		2016-17		YIELD 2017	YIELD 2016
	Admit	Enroll	Admit	Enroll		
<b>Delaware College of Art and Design</b>	<b>158</b>	<b>55</b>	<b>258</b>	<b>89</b>	<b>34%</b>	<b>34%</b>
Delaware County Community College	Blank	Blank	Blank	Blank		
Delaware Technical Community College	Blank	Blank	Blank	Blank		
Maryland Institute College of Art	2240	423	1984	351	19%	18%
Moore College of Art and Design	432	89	312	71	21%	23%
Pennsylvania College of Art and Design	165	38	187	75	23%	40%
Savannah College of Art and Design	9174	2437	8065	2223	27%	27%
The University of the Arts	1269	410	1241	407	32%	33%
University of Delaware	17484	4671	16998	4382	27%	26%

## ENROLLMENT DATA

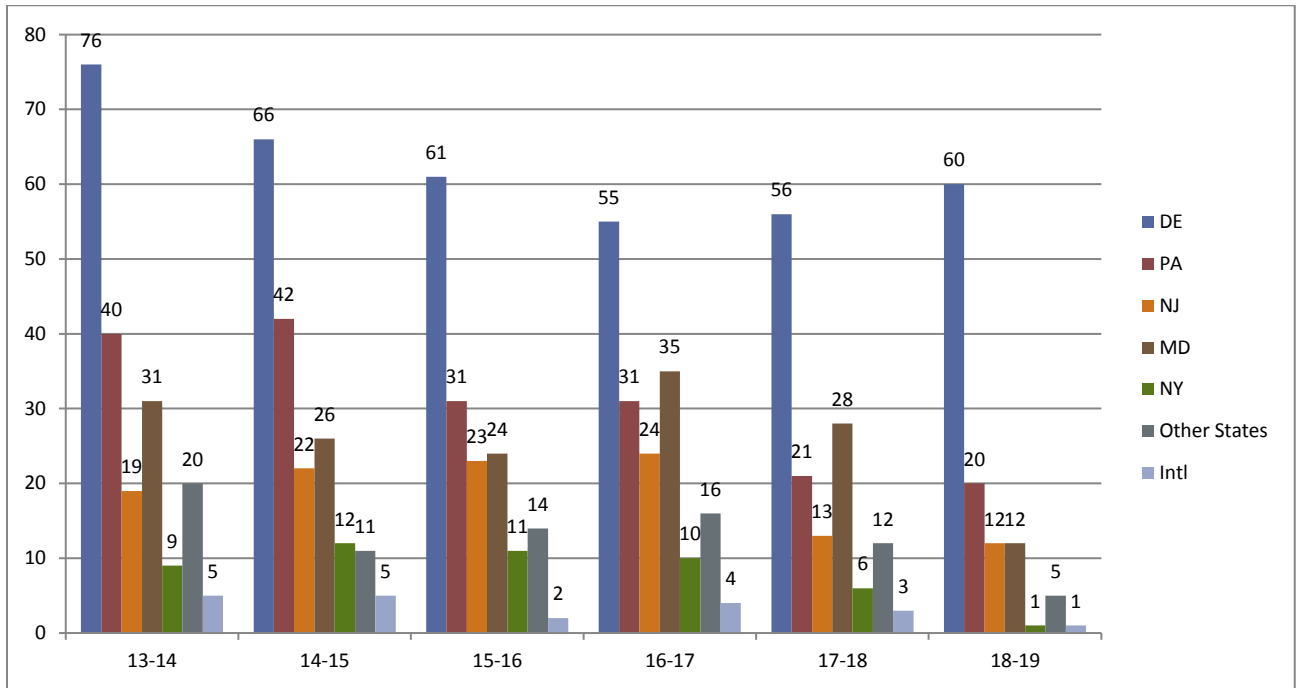
### 2011 – 2019 Unduplicated Headcount



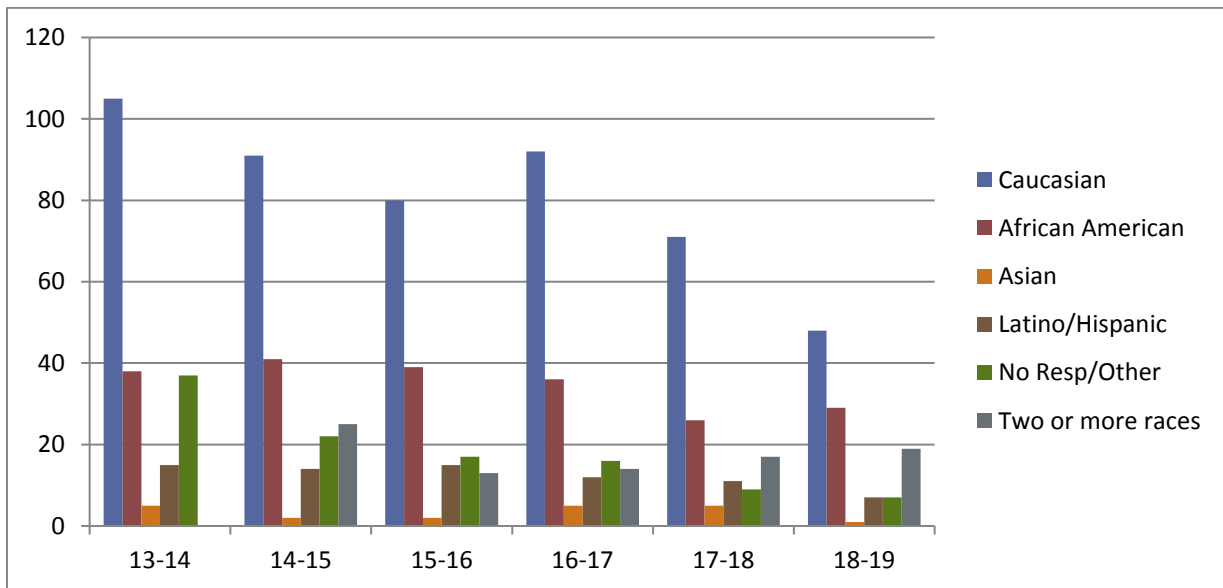
### 2013 – 2018 Full- and Part-time Enrollment Status (Fall Semester)



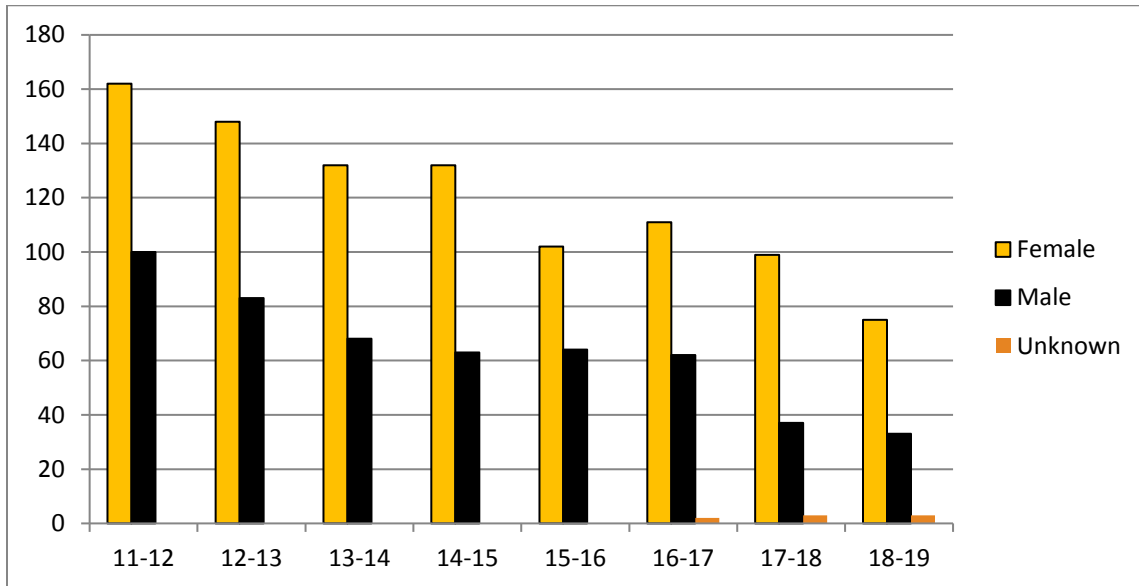
### 2013 – 2019 Total Enrollment by Location



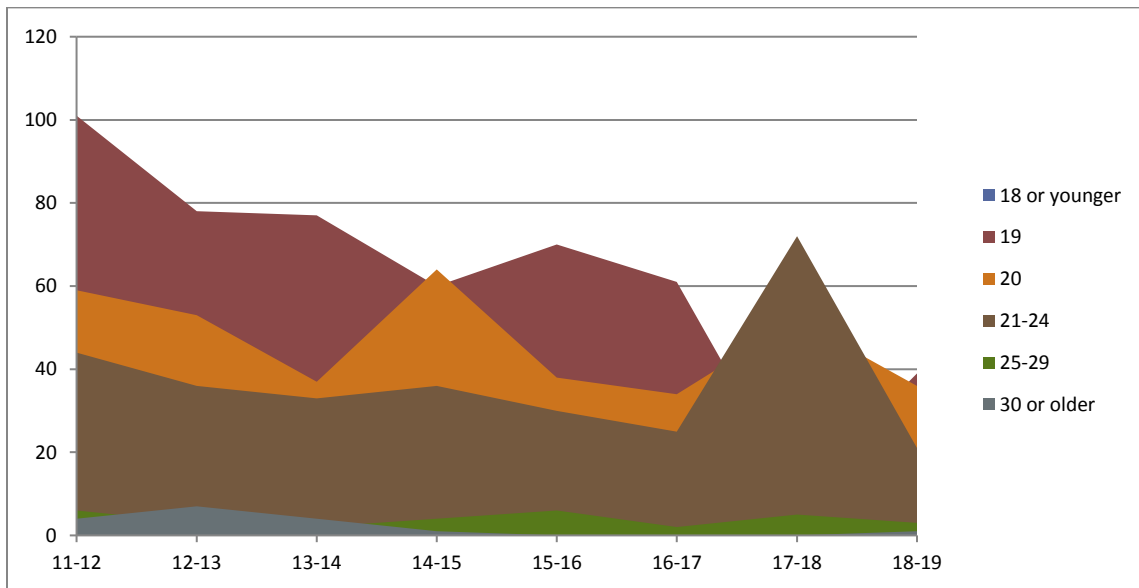
### 2013 – 2019 Total Enrollment by Race/Ethnicity



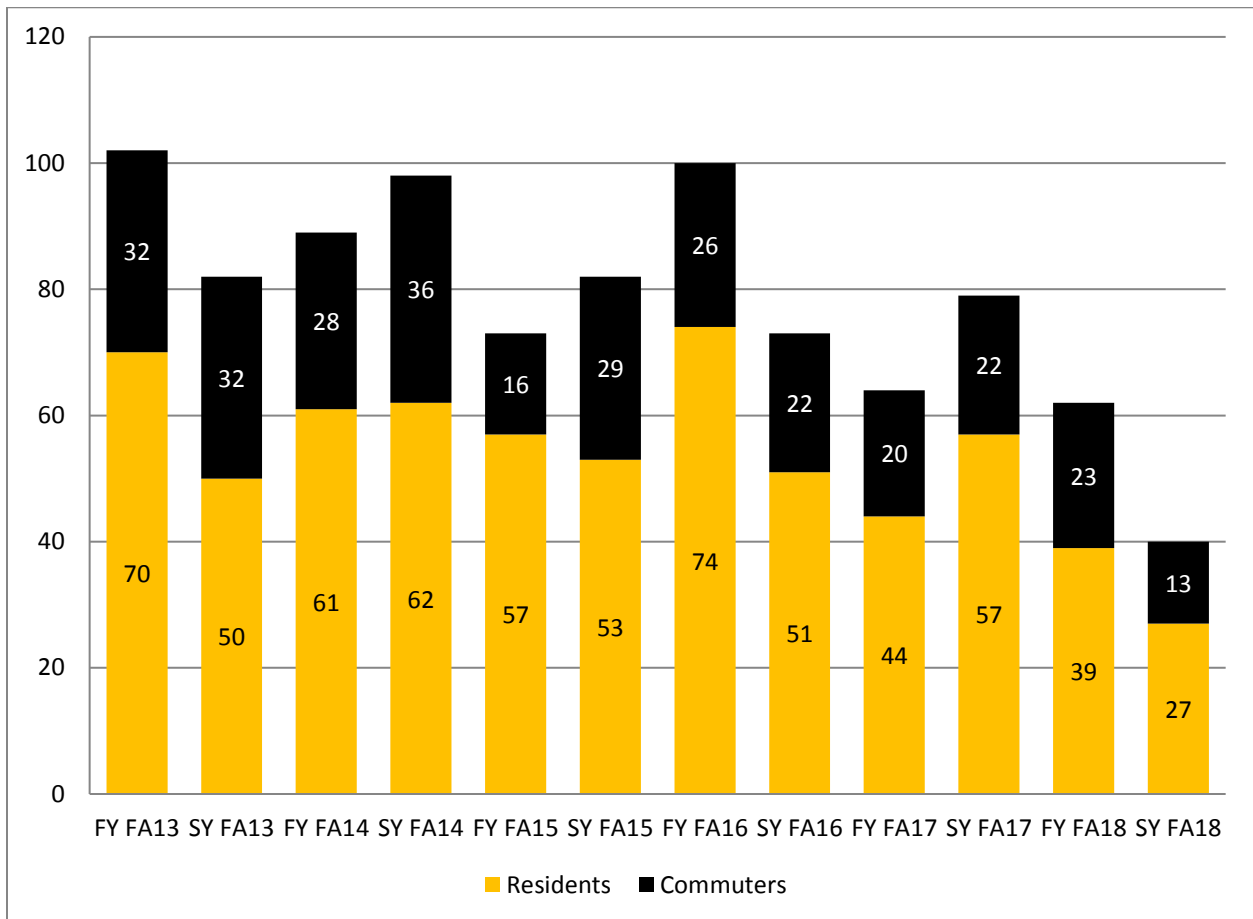
### 2012-2019 Total Enrollment by Gender



### 2012-2019 Total Enrollment by Age



### Fall 2013 - 2018 Commuter vs. Residential Enrollment by First-Year/Second-Year



### Fall 2013 - 2018 Resident vs. Commuter Enrollment

Year	Residents	Commuters	Total	Residents %	Commuters %
FA13	120	64	184	65%	35%
FA14	123	64	187	66%	34%
FA15	110	45	155	71%	29%
FA16	125	48	173	72%	28%
FA17	101	42	143	71%	29%
FA18	66	32	98	67%	33%



## PERSISTENCE AND GRADUATION RATES

### 2013-2018 Fall Cohort Enrollment, Dropout Rates, and Graduation Rates

Entering Fall Term		Enrollment and Dropout Rates				Graduation Rates			
		1st *Fall	2nd Fall	3rd Fall	4th Fall	within 2 yrs	within 3 yrs	within 4 yrs	Total
2013	N	99	90	8	2	56	9	1	66
	% enrollment	0.0%	90.9%	8.1%	0.0%	56.6%	9.1%	0.0%	66.7%
	% dropout	0.0%	9.1%	25.3%	0.0%				
2014	N	96	72	3	2	48	3	0	51
	% enrollment	0.0%	75.0%	3.1%	0.0%	50.0%	3.1%	0.0%	53.1%
	% dropout	0.0%	25.0%	43.8%	0.0%				
2015	N	78	66	2	0	44	3	0	47
	% enrollment	0.0%	84.6%	2.6%	0.0%	56.4%	3.8%	0.0%	60.3%
	% dropout	0.0%	15.4%	37.2%	0.0%				
2016	N	97	73	0	0	53	1	0	54
	% enrollment	0.0%	75.3%	0.0%	0.0%	54.6%	1.0%	0.0%	55.7%
	% dropout	0.0%	24.7%	0.0%	0.0%				
2017	N	64	36	0	0	0	0	0	0
	% enrollment	0.0%	56.3%	0.0%	0.0%	0.0%	0.0%	0.0%	0.0%
	% dropout	0.0%	43.8%	0.0%	0.0%				
2018	N	70	0	0	0				
	% enrollment	0.0%	0.0%	0.0%	0.0%				
	% dropout	0.0%	0.0%	0.0%	0.0%				

\*Data represents fall cohort and the following spring cohort for all DCAD students. Whereas IPEDS graduation and retention rates are calculated using first-time, full-time cohorts.

**IPEDS Peer Retention Rates – Full-time, Part-time**

Institution Name	2017		2016		2015		2014		2013	
	FT	PT	FT	PT	FT	PT	FT	PT	FT	PT
Art Academy of Cincinnati	69%		55%		72%		67%		71%	
Cleveland Institute of Art	89%		82%		83%		81%		78%	
<b>Delaware College of Art and Design</b>	<b>80%</b>		<b>82%</b>	<b>100%</b>	<b>88%</b>	<b>100%</b>	<b>90%</b>	<b>75%</b>	<b>74%</b>	<b>100%</b>
Maine College of Art	72%	0%	61%	33%	65%	100%	75%		63%	
Memphis College of Art	71%	36%	78%	75%	72%	25%	68%		69%	
Moore College of Art and Design	77%		73%	100%	73%		84%		79%	100%
Pacific Northwest College of Art	68%	50%	59%		68%		83%		74%	
Pennsylvania Academy of the Fine Arts	76%		65%		81%		93%		100%	
Pennsylvania College of Art and Design	77%		77%		68%		67%		76%	
School of the Museum of Fine Arts-Boston					76%	100%	87%		72%	
Watkins College of Art Design & Film	65%	0%	58%		71%	100%	57%		64%	67%

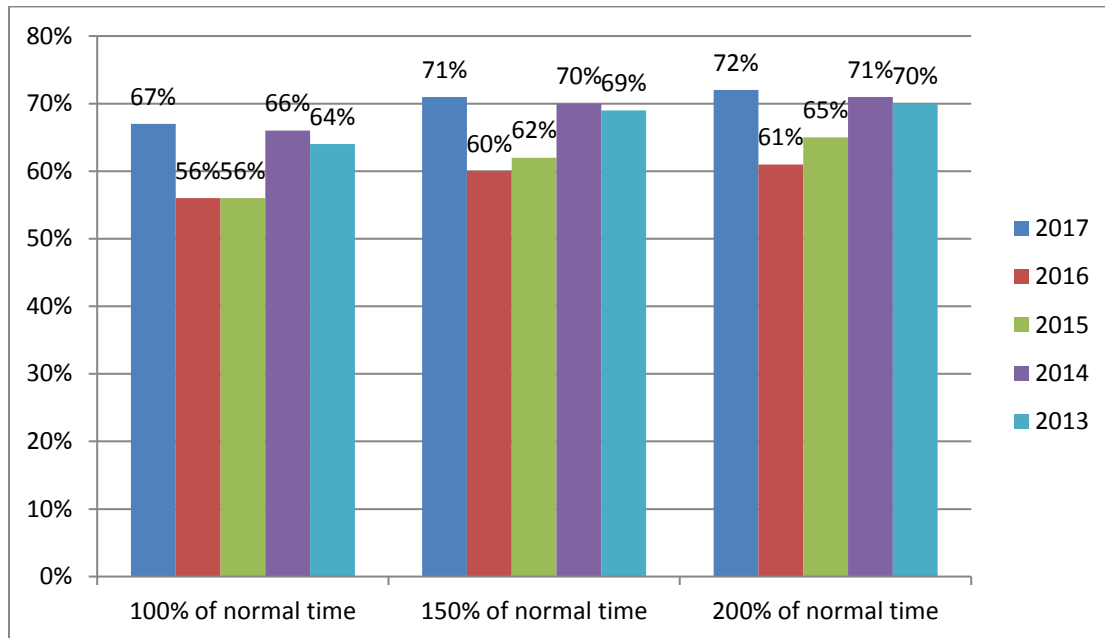
FT: Full-Time, PT: Part-Time

**IPEDS Competitor Retention Rates – Full-time, Part-time**

Institution Name	2017		2016		2015		2014		2013	
	FT	PT	FT	PT	FT	PT	FT	PT	FT	PT
<b>Delaware College of Art and Design</b>	<b>80%</b>		<b>82%</b>	<b>100%</b>	<b>88%</b>	<b>100%</b>	<b>90%</b>	<b>75%</b>	<b>74%</b>	<b>100%</b>
Delaware County Community College	58%	39%	59%	42%	61%	43%	61%	40%	63%	43%
Delaware Technical Community College					61%	37%	57%	34%	54%	32%
Maryland Institute College of Art	87%		88%		88%		88%		83%	
Moore College of Art and Design			73%	100%	73%		84%		79%	100%
Pennsylvania College of Art and Design			77%		68%		67%		76%	
Savannah College of Art and Design	83%	69%	85%	70%	85%	81%	82%	73%	81%	83%
The University of the Arts	82%		83%		76%		81%		82%	67%
University of Delaware	91%	100%	91%	83%	92%	50%	91%	70%	92%	46%

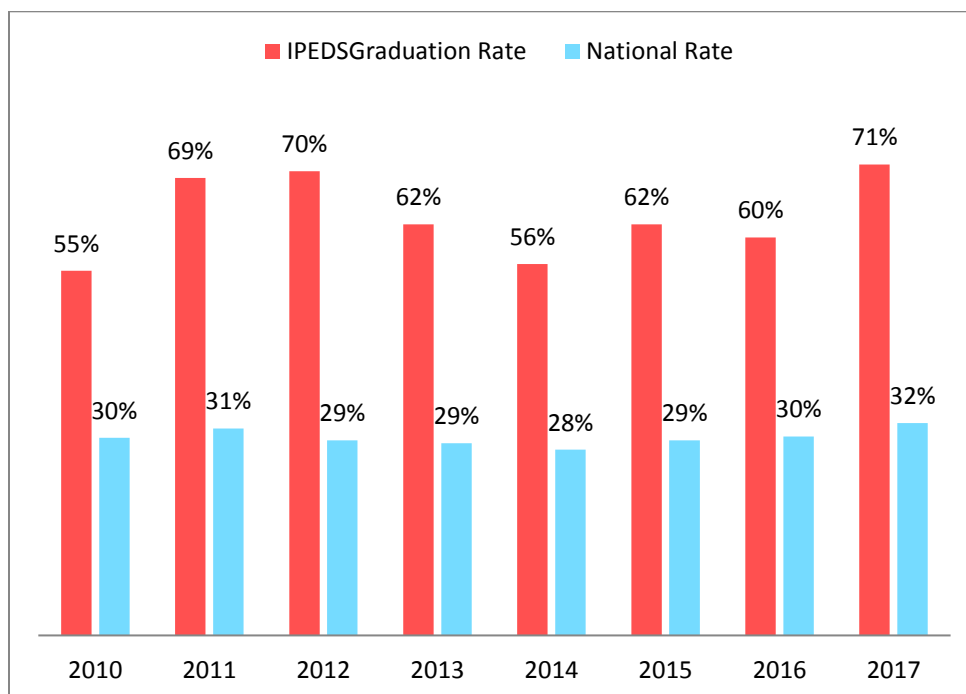
FT: Full-Time, PT: Part-Time

### IPEDS Graduation Rates, by Time of Completion\*



Graduation rates for first-time, full-time can be measured over different lengths of time. "Normal time" is the typical amount of time it takes full-time students to complete their program. For example, the "normal" amount of time for many associate's degree programs is 2 years. Not all students complete within the normal time, so graduation rates are measured by other lengths of time as well, including "150% of normal time" (e.g., 3 years for a 2-year program) and "200% of normal time," or twice as long as the normal time (e.g., 4 years for a 2-year program)

### 2010 – 2017 IPEDS, National 2YR Graduation Rate Comparison



## 2010-2017 Graduation Rate for Pell, Other Need-based Aid, and Non-aid Recipients

Cohort	2-Year Pell	2 Year Other Need Based	2 Year Non-Aid	3 Year Pell	3 Year Other Need Based	3 Year Non-Aid
2010	80.95%	90.00%	73.33%	19.05%	10.00%	26.66%
2011	87.88%	86.88%	75.00%	12.12%	13.11%	25.00%
2012	85.00%	86.15%	88.23%	15.00%	13.85%	11.77%
2013	83.33%	87.09%	94.44%	16.66%	12.91%	5.55%
2014	84.00%	84.00%	100.00%	16.00%	16.00%	
2015	100.00%	95.23%	100.00%		4.77%	
2016	96.43%	100.00%	100.00%	1.96%		
2017	100.00%	100.00%	100.00%			

## 2013-09 - 2017-09 Pell Cohort, Gender\*

	Administrative Withdraw	Completed	Dismissed	Graduated	Withdrawal	Grand Total
2013-09	<b>0.00%</b>		<b>2.75%</b>	<b>66.06%</b>	<b>31.19%</b>	<b>109</b>
<b>F</b>	0.00%		1.33%	72.00%	26.67%	75
<b>M</b>	0.00%		5.88%	52.94%	41.18%	34
2014-09	<b>0.00%</b>	<b>2.5%</b>	<b>10%</b>	<b>57.50%</b>	<b>30%</b>	<b>40</b>
F	0.00%	0.00%	12.50%	62.50%	25.00%	24
M	0.00%	6.25%	6.25%	50.00%	37.50%	16
2015-09	<b>0.00%</b>	<b>4.65%</b>	<b>4.65%</b>	<b>58.14%</b>	<b>32.56%</b>	<b>43</b>
F	0.00%	4.00%	0.00%	60.00%	36.00%	25
M	0.00%	5.56%	11.11%	55.56%	27.78%	18
2016-09	<b>1.89%</b>	<b>0.00%</b>	<b>3.77%</b>	<b>52.83%</b>	<b>41.51%</b>	<b>53</b>
F	3.03%	0.00%	0.00%	60.61%	36.36%	33
M	0.00%	0.00%	11.11%	33.33%	55.56%	18
O	0.00%	0.00%	0.00%	100.00%	0.00%	2
2017-09**	<b>0.00%</b>	<b>0.00%</b>	<b>16.00%</b>	<b>32.00%</b>	<b>48.00%</b>	<b>25</b>
F	0.00%	0.00%	21.43%	35.71%	42.86%	14
M	0.00%	0.00%	9.09%	27.27%	54.55%	11
O	0.00%	0.00%	0.00%	0.00%	0.00%	0.00%
<b>Grand Total</b>	<b>2.52%</b>		<b>8.35%</b>	<b>58.74%</b>	<b>30.39%</b>	<b>635</b>

\*Spring & summer start terms have been changed to the corresponding fall start term for the purposes of this Pell analysis. Analysis is from internal data not calculated using IPEDS cohorts.

**2013-09 - 2017-09 Graduation Rate Pell Cohort, Ethnicity**

	<b>Administrative Withdraw</b>	<b>Completed</b>	<b>Dismissed</b>	<b>Graduated</b>	<b>Withdrawal</b>	<b>Grand Total</b>
<b>2013-09</b>			<b>2.75%</b>	<b>66.06%</b>	<b>31.19%</b>	<b>109</b>
Asian				100.00%		2
Black or African American			5.88%	70.59%	23.53%	17
Hispanics of any race				25.00%	75.00%	8
Nonresident Alien				71.43%	28.57%	7
Not Applicable				80.00%	20.00%	5
Race and ethnicity unknown				25.00%	75.00%	4
Two or more races			10.00%	70.00%	20.00%	10
White			1.79%	69.64%	28.57%	56
<b>2014-09</b>	<b>0.00%</b>	<b>2.50%</b>	<b>10.00%</b>	<b>57.50%</b>	<b>30%</b>	<b>40</b>
Black or African American			6.67%	66.67%	26.67%	15
Hispanics of any race				100.00%		2
Not Applicable				100.00%		1
Race and ethnicity unknown				50.00%	50.00%	2
Two or more races			14.29%	42.86%	42.86%	7
White		7.69%	15.38%	46.15%	30.77%	13
<b>2015-09</b>	<b>0.00%</b>	<b>4.65%</b>	<b>4.65%</b>	<b>58.14%</b>	<b>32.56%</b>	<b>43</b>
American Indian or Alaska Native					100.00%	1
Black or African American			16.67%	25.00%	58.33%	12
Hispanics of any race		33.33%		50.00%	16.67%	6
Not Applicable				100.00%		2
Race and ethnicity unknown				100.00%		1
Two or more races				40.00%	60.00%	5
White				87.50%	12.50%	16
<b>2016-09</b>	<b>1.89%</b>	<b>0.00%</b>	<b>3.77%</b>	<b>52.83%</b>	<b>41.51%</b>	<b>53</b>
Black or African American				53.33%	46.67%	15
Hispanics of any race	20.00%			80.00%		5
Not Applicable			25.00%	25.00%	50.00%	4
Two or more races			16.67%	33.33%	50.00%	6
White				56.52%	43.48%	23
<b>2017-09</b>	<b>0.00%</b>	<b>0.00%</b>	<b>20.00%</b>	<b>32.00%</b>	<b>48.00%</b>	<b>25</b>
Black or African American				50.00%	50.00%	8
Hispanics of any race			50.00%	0.00%		2
Two or more races			33.33%	16.67%	50.00%	6
White			22.22%	44.44%	33.33%	9
<b>Grand Total</b>	<b>2.13%</b>	<b>0.38%</b>	<b>8.29%</b>	<b>57.41%</b>	<b>31.78%</b>	<b>796</b>

## 2008 – 2015 Graduation Rate First Generation Students\*

---

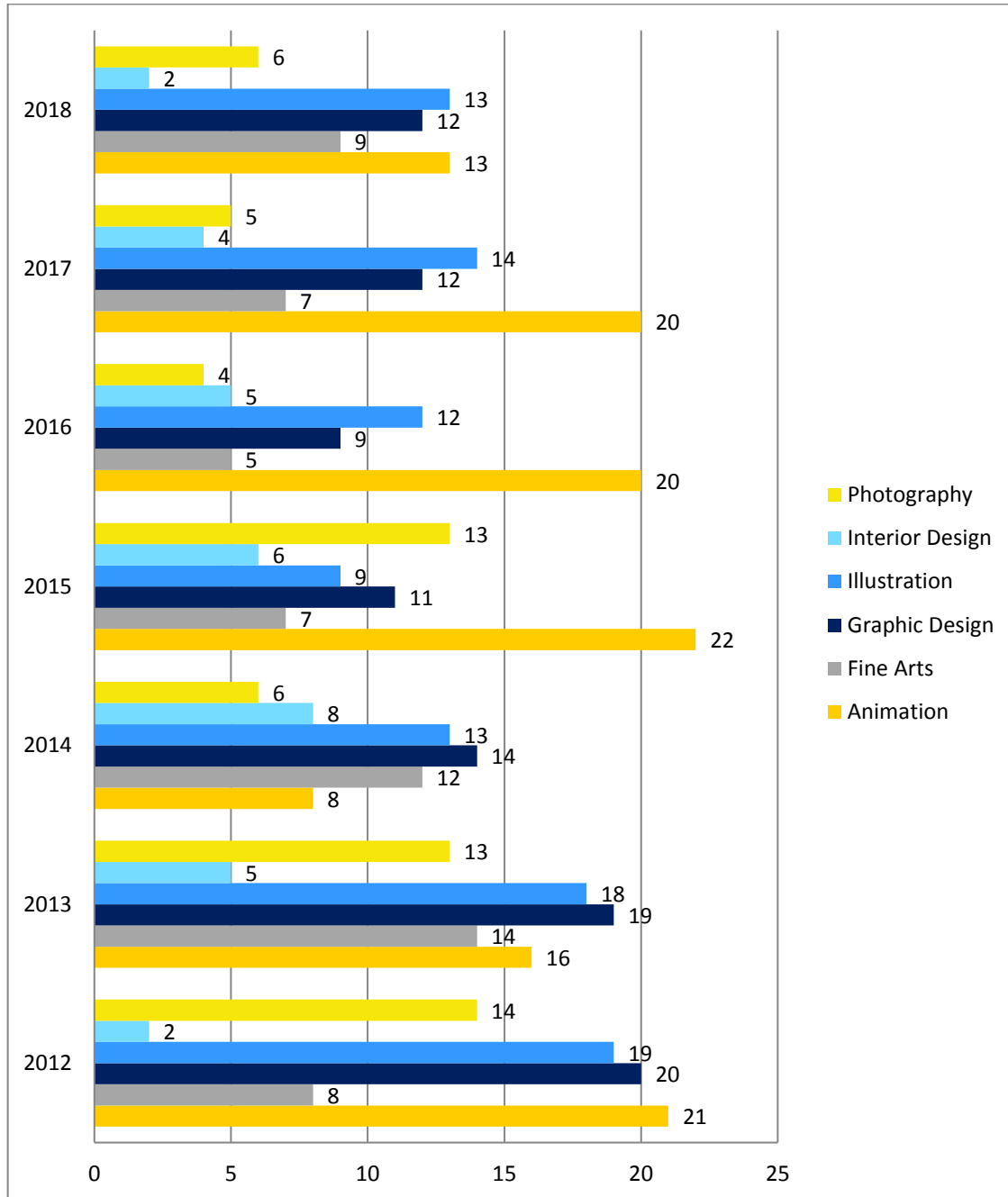
	Count	Percent of Grand Total	Average of HSGPA	Average DCAD GPA
<b>Alumnus</b>	175	60%	2.90	3.15
<b>Student</b>	14	5%	2.53	2.64
<b>Student-Inactive</b>	107	35%	2.68	2.07
<b>Grand Total</b>	296		2.80	2.73

\*Student whose parents have never enrolled in post-secondary education (DCAD)

\*\*According to statistics, first-generation college students are four times more likely to drop out of college-level education than second-generation students from higher-income families. In the US, roughly 4.5 million freshmen in college are classified as first-generation, low-income students. Statistics show that of that 4.5 million, 89% will leave college without a degree” ([Plaza College](#)).

\*\*First Generation Students are more likely to graduate at Independent Colleges and Universities ([Council of Independent Colleges](#)).

## 2012-2018 Degrees by Program



## TRANSFER

### 2013-2017 DCAD Top 5 Transfer Institutions

Total Students Transferred	196
<b>Transferring Institution:</b>	
Maryland Institute College of Art	7%
Moore College of Art and Design	9%
Pratt Institute	32%
Savannah College of Art and Design	6%
University of the Arts	15%

### 2015-2017 DCAD Withdrawn Student Transfer-out Rate

Academic Year	Transferred out	Total withdraws	Transfer out %
<b>2015-16</b>	9	23	39%
<b>2016-17</b>	20	47	43%



## TUITION AND FEES

### 2013 – 2020 DCAD Tuition and Fees, per Semester

	2013-2014	2014-2015	2015-2016	2016-2017	2017-2018
Per Credit hour	\$915	\$950	\$975	\$1,005	\$1,040
Full-Time Tuition (12-18 Credits)	\$10,425	10,800	\$11,200	\$11,595	\$12,025
Full-Time Fees	\$740	\$765	\$795	\$820	\$830
<b>Semester Tuition &amp; Fees Total</b>	<b>\$11,165</b>	<b>\$11,565</b>	<b>\$11,995</b>	<b>\$12,415</b>	<b>\$12,855</b>
Percent Increase	4.5%	3.6%	3.7%	3.3%	3.4%
Student Housing: Double	\$3,825	\$3,950	\$3,950	\$3,950	\$4,090
Meal Plan*	\$1,800	\$1,865	\$1,975	\$2,050	\$2,135
<b>Room &amp; Board Total</b>	<b>\$5,625</b>	<b>\$5,815</b>	<b>\$5,925</b>	<b>\$6,000</b>	<b>\$6,225</b>
Percent Increase	0%	3.4%	1.9%	1.2%	3.6%

\*Added meal plan in 2012-2013

Tuition and fees were not increased for 2018-2019 or 2019-2020.

### 2014– 2017 Tuition and Fees for First-Time, Full-Time for Peer Institutions\*

Institution Name	2014-15	2015-16	% Increase	2016-17	% Increase
Art Academy of Cincinnati	\$26,376	\$27,788	5%	\$29,752	7%
Cleveland Institute of Art	\$37,565	\$38,487	2%	\$39,585	3%
Delaware College of Art and Design	\$23,130	\$23,990	3%	\$24,830	3%
Maine College of Art	\$31,670	\$32,290	2%	\$32,922	2%
Memphis College of Art	\$28,870	\$30,250	4%	\$31,700	4%
Moore College of Art and Design	\$35,410	\$36,828	4%	\$38,301	4%
Pacific Northwest College of Art	\$33,714	\$33,070	-2%	\$34,500	4%
Pennsylvania Academy of the Fine Arts	\$32,695	\$34,410	5%	\$36,058	4%
Pennsylvania College of Art and Design	\$22,000	\$22,800	3%	\$23,800	4%
School of the Museum of Fine Arts-Boston	\$40,348	\$41,228	2%	N/A	N/A
Watkins College of Art Design & Film	\$20,250	\$20,790	2%	\$23,700	12%

**2014– 2017 Tuition and Fees for First-Time, Full-Time for Competitor Institutions\***

<b>Institution Name</b>	<b>2014-15</b>	<b>2015-16</b>	<b>% Increase</b>	<b>2016-17</b>	<b>% Increase</b>
<b>Delaware College of Art and Design</b>	<b>\$23,130</b>	<b>\$23,990</b>	<b>3%</b>	<b>\$24,830</b>	<b>3%</b>
Delaware County Community College*	\$8,110	\$8,350	3%	\$8,530	2%
Delaware Technical Community College*	\$3,530	\$3,632	3%	\$4,607	2%
Maryland Institute College of Art	\$42,390	\$43,870	3%	\$45,400	3%
Moore College of Art and Design	\$35,410	\$36,828	4%	\$38,301	4%
Pennsylvania College of Art and Design	\$22,000	\$22,800	5%	\$23,800	4%
Savannah College of Art and Design	\$34,295	\$34,970	2%	\$35,690	2%
The University of the Arts	\$38,410	\$39,908	4%	\$41,464	4%
University of Delaware*	\$12,342	\$12,520	1%	\$12,830	2%

\* In-state tuition and fees

## FINANCIAL AID

### 2014-2017, IPEDS Pell Grant Peer Institutions

Institution Name	Average Pell grant aid received by full-time first-time undergraduates 2016-17	Average Pell grant aid received by full-time first-time undergraduates 2015-16	Average Pell grant aid received by full-time first-time undergraduates 2014-15
Art Academy of Cincinnati	\$3,666	\$4,151	\$4,504
Cleveland Institute of Art	\$4,278	\$4,685	\$4,564
Delaware College of Art and Design	\$4,300	\$4,633	\$4,474
Maine College of Art	\$3,892	\$4,083	\$4,051
Memphis College of Art	\$2,628	\$4,284	\$4,577
Moore College of Art and Design	\$4,883	\$4,593	\$4,332
Pacific Northwest College of Art	\$3,968	\$4,336	\$4,406
Pennsylvania Academy of the Fine Arts	\$4,408	\$4,756	\$4,731
Pennsylvania College of Art and Design	\$4,393	\$4,287	\$4,555
School of the Museum of Fine Arts-Boston		\$4,489	\$4,080
Watkins College of Art Design & Film	\$2,093	\$2,285	\$2,236

### 2014-2017, IPEDS Institutional Grant Peer Institutions

Institution Name	Average amount of institutional grant aid 2016-17	Average amount of institutional grant aid 2015-16	Average amount of institutional grant aid 2014-15
Art Academy of Cincinnati	\$10,166	\$1,4763	\$1,4941
Cleveland Institute of Art	\$21,559	\$21,460	\$20,474
Delaware College of Art and Design	\$11,865	\$10,732	\$7,358
Maine College of Art	\$16,585	\$15,696	\$15,154
Memphis College of Art	\$9,632	\$1,8042	\$1,7845
Moore College of Art and Design	\$16,123	\$1,7805	\$13,400
Pacific Northwest College of Art	\$15,126	\$14,459	\$14,108
Pennsylvania Academy of the Fine Arts	\$17,791	\$17,493	\$16,227
Pennsylvania College of Art and Design	\$6,137	\$,6232	\$5,999
School of the Museum of Fine Arts-Boston		\$14,324	\$14,396
Watkins College of Art Design & Film	\$8,293	\$4,496	\$4,983

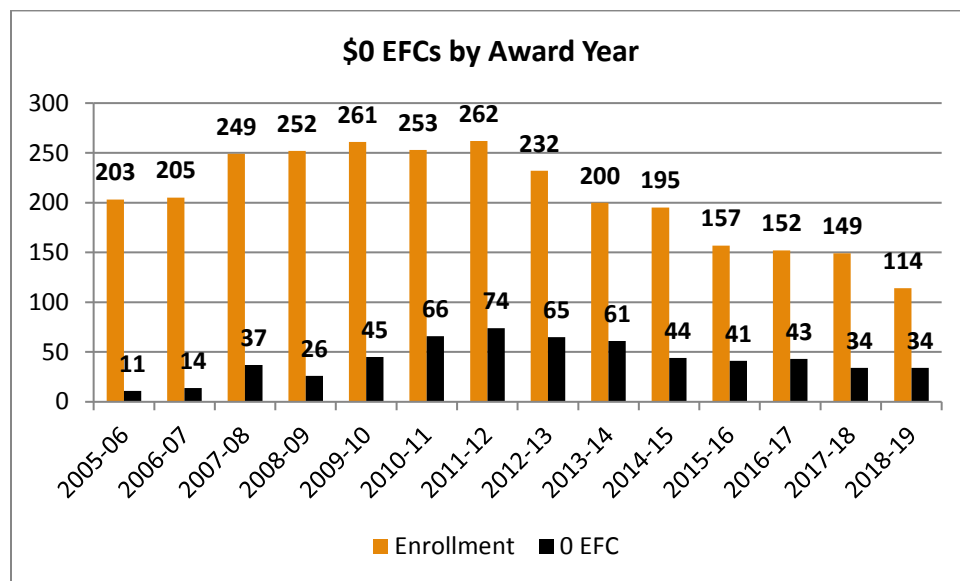
## 2014-2017, IPEDS Pell Grant Competitor Institutions

Institution Name	Average Pell grant aid received by full-time first-time undergraduates 2016-17	Average Pell grant aid received by full-time first-time undergraduates 2015-16	Average Pell grant aid received by full-time first-time undergraduates 2014-15
Delaware College of Art and Design	\$4,300	\$4,633	\$4,474
Delaware County Community College	\$4,457	\$3,436	\$3,375
Delaware Technical Community College - Terry	\$3,728	\$3,277	\$3,300
Maryland Institute College of Art	\$5,743	\$4,560	\$4,637
Moore College of Art and Design	\$4,883	\$4,593	\$4,332
Pennsylvania College of Art and Design	\$4,393	\$4,287	\$4,555
Savannah College of Art and Design	\$4,453	\$4,324	\$4,293
The University of the Arts	\$4,233	\$4,622	\$4,393
University of Delaware	\$4,180	\$4,183	\$4,126

## 2014-2017, IPEDS Institutional Aid Competitor Institutions

Institution Name	Average amount of institutional grant aid 2016-17	Average amount of institutional grant aid 2015-16	Average amount of institutional grant aid 2014-15
Delaware College of Art and Design	\$11,865	\$10,732	\$7,358
Delaware County Community College	\$3,614	\$6,099	\$5,856
Delaware Technical Community College - Terry	\$3,236	\$3,347	\$3,337
Maryland Institute College of Art	\$17,895	\$18,153	\$17,186
Moore College of Art and Design	\$16,123	\$17,805	\$13,400
Pennsylvania College of Art and Design	\$6,137	\$6,232	\$5,999
Savannah College of Art and Design	\$12,560	\$12,687	\$12,228
The University of the Arts	\$22,016	\$20,071	\$18,741
University of Delaware	\$9,573	\$9,471	\$9,085

## 2005-2019 "0" Expected Family Contribution (EFC)



## 2009-2019 Financial Aid Awards

Financial Aid Award Year Cohort	Total # Enrolled Students	Total # Students Receiving FA	% Receiving Financial Aid	Average EFC	Number of "0" EFC	% of \$0 EFC compared to Total FA Recipient
2009 -2010	261	221	84.67%	\$13,424	60	22.99%
2010 - 2011	253	229	90.51%	\$10,319	71	31.00%
2011 - 2012	263	242	92.01%	\$10,724	74	30.58%
2012 - 2013*	232	218	93.97%	\$14,312	65	29.82%
2013 - 2014	200	196	97.50%	\$9,932	56	29.00%
2014 - 2015	195	157	80.50%	\$12,634	44	28.00%
2015 - 2016	157	137	87.26%	\$12,353	41	29.93%
2016 - 2017	152	143	94.08%	\$11,404	43	30.07%
2017 - 2018	149	128	84.21%	\$15,904	34	26.56%
2018 - 2019	114	106	92.98%	\$11,707	34	32.08%

\*Additional Meal Plan

## 2009 – 2018 “0” EFC, Academic Status

	Total # Grads	# \$0 EFC Grads of Total Grads	Percent \$0 EFC Grads of Total grads	# Total Withdrawals	# Withdrawals with \$0 EFC of Total Withdrawals	% Withdrawals with \$0 EFCs of Total Withdrawals
2009-2010	64	12	18.75%	53	12	22.64%
2010-2011	78	21	26.92%	38	6	15.79%
2011-2012	81	22	27.16%	54	17	31.48%
2012-2013*	77	19	24.68%	46	11	23.91%
2013-2014	55	19	34.55%	20	8	40%
2014-2015	55	9	16.36%	34	4	11.76%
2015-2016	58	34	21.66%	13	3	23.08%
2016-2017	50	43	25.15%	40	9	22.50%
2017-2018	58	34	23.94%	45	14	31.11%

\*Additional Meal Plan cost

## FY15 – 3 Year Cohort Default Rate

School Default Rates 3-year FY 2015; source [Official DoE Cohort Default Rate\\*](#)

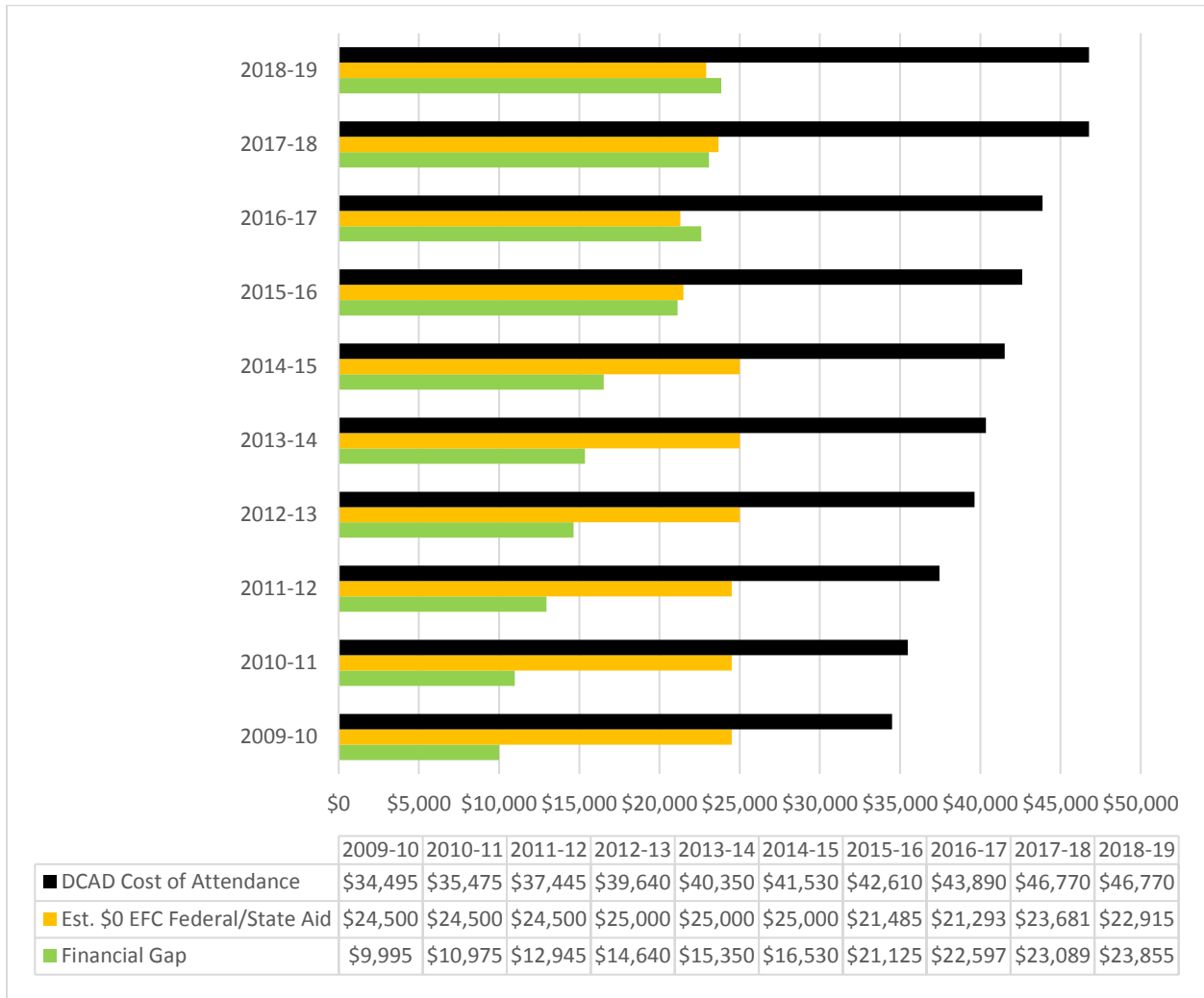
OPE ID	School	Type	Control	PRGMS		FY2015	FY2014	FY2013
041398	DCAD 600 NORTH MARKET STREET WILMINGTON DE 19801-3007	Associate's Degree	Private	Both (FFEL/FDL)	Default Rate	11.8	11.6	10.1
					No. in Default	11	12	11
					No. in Repay	93	103	108
					Enrollment figures	207	238	263
					Percentage Calculation	44.9	43.2	41

\*FY 2015 the 3-year national cohort default rate is 10.8 percent.

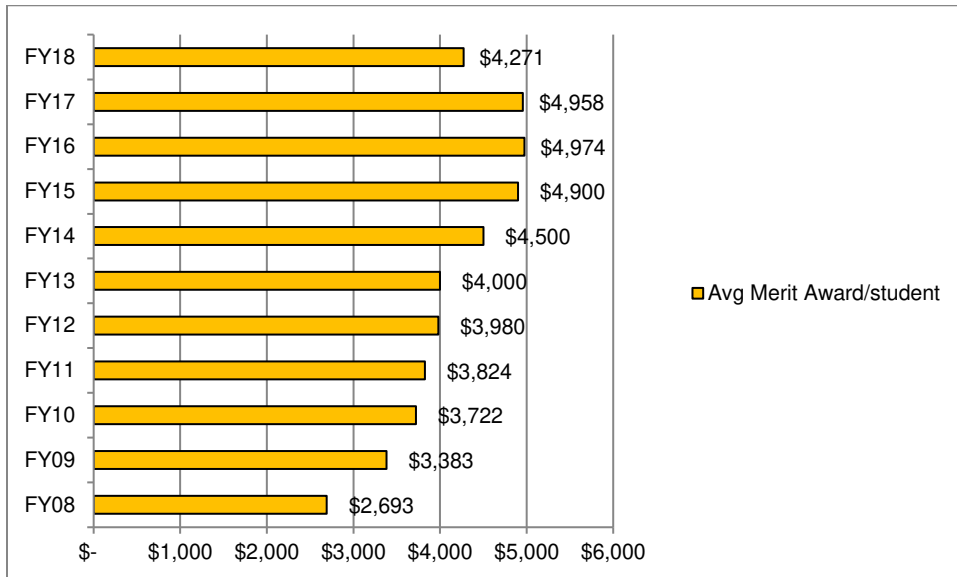
CDR for Delaware is 9.5%. Private 2-3 year institutions is 16.7 and private 4 years (+) is 6.6%

**ENROLLMENT: To provide context for the Cohort Default Rate (CDR) data we include enrollment data (students enrolled at any time during the year) and a corresponding percentage (borrowers entering repayment divided by that enrollment figure). While there is no direct relationship between the timing of when a borrower entered repayment (October 1 through September 30) and any particular enrollment year, for the purpose of these data, we have chosen to use the academic year ending on the June 30 prior to the beginning of the cohort year (e.g., FY 2015 CDR Year will use 2013-2014 enrollment).**

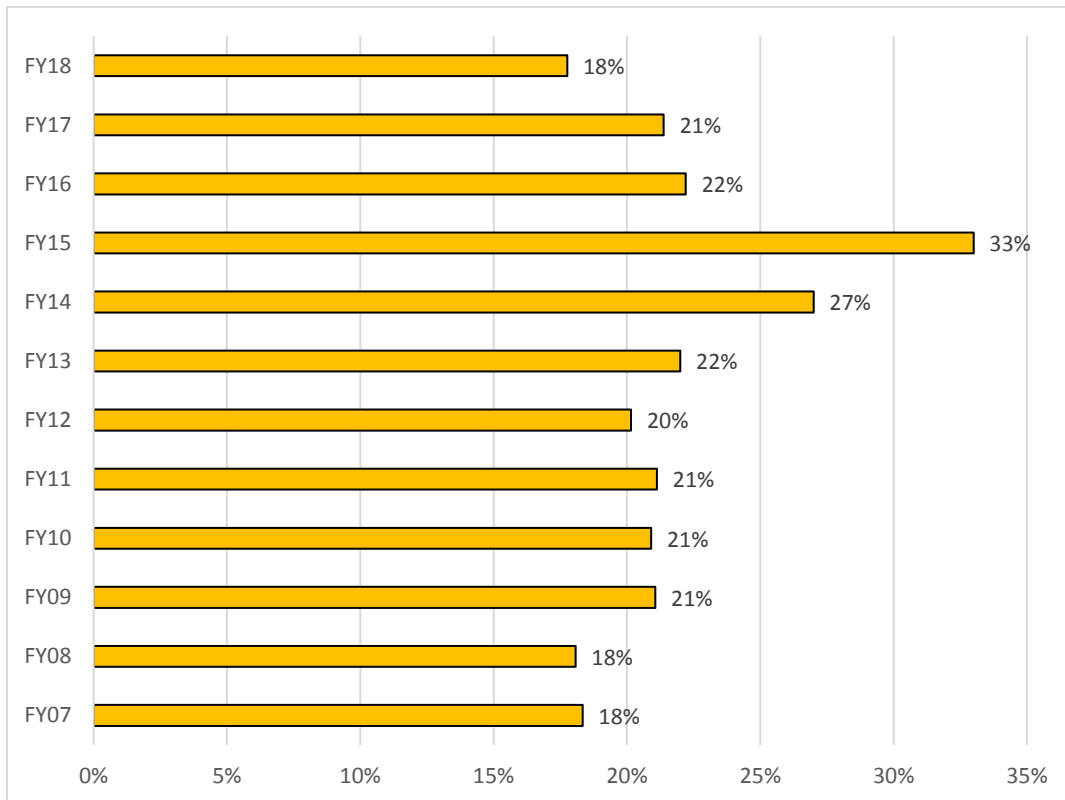
## 2009-2018 DCAD Cost of Attendance



**2007 – 2018 Merit Award per Student**



**2007 – 2018 Institutional Aid % of Tuition**



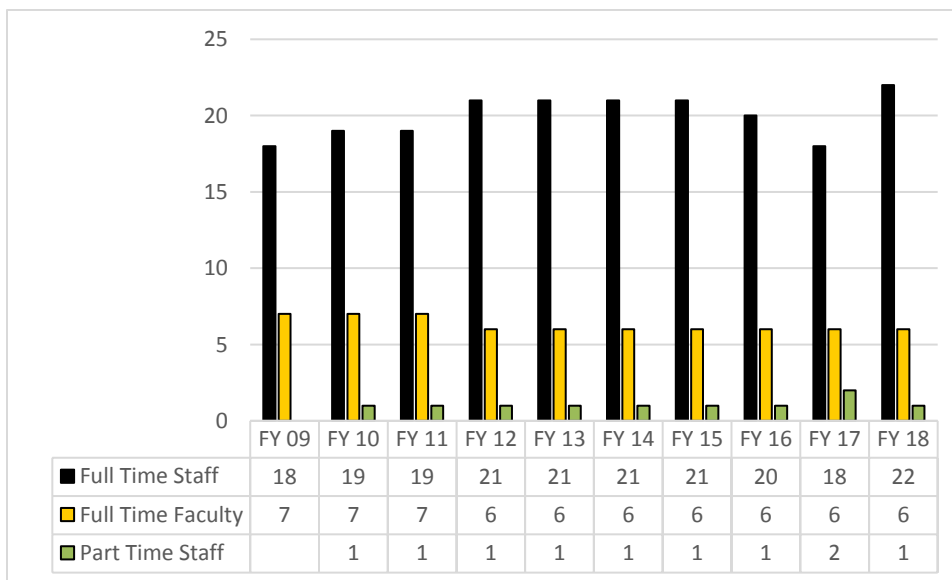


## EMPLOYEES

### 2018-19 Faculty Academic Credentials

2018-19	AFA	BFA	MArch	MA	MEd	MFA	MS	PhD	Grand Total
<b>Full-Time</b>						<b>5</b>		<b>1</b>	<b>6</b>
AN						1			1
FA						1			1
GD						1			1
IL						1			1
LA								1	1
PH						1			1
<b>Part-Time</b>	<b>1</b>	<b>5</b>	<b>1</b>	<b>4</b>	<b>1</b>	<b>10</b>	<b>1</b>	<b>3</b>	<b>26</b>
AN	1	1							2
FA						2			2
FN		1				3			4
GD		1							1
ID			1				1		2
IL		1				2			3
LA				4	1	2		3	7
PH		1				1			2
<b>Grand Total</b>	<b>8</b>	<b>8</b>	<b>3</b>	<b>4</b>	<b>1</b>	<b>12</b>	<b>1</b>	<b>3</b>	<b>30</b>

### 2009 – 2018 Employees



## CONTINUING EDUCATION

### 2013 – 2018 CE Enrollment

ENROLLMENT	Total	New	% New	Returning	% Returning
2013-01	137	57	42%	80	58%
2013-06	113	79	76%	27	24%
2013-09	70	34	49%	36	51%
2014-01	132	66	50%	66	50%
2014-06	130	84	65%	46	35%
2014-09	52	23	44%	29	56%
2015-01	108	61	56%	47	44%
2015-06	97	61	63%	36	37%
2015-09	82	39	48%	43	52%
2016-01	255	139	56%	116	44%
2016-06	46	20	43%	26	57%
2016-09	94	42	45%	52	55%
2017-01	148	64	43%	84	57%
2017-06	70	24	34%	46	66%
2017-09	123	49	40%	74	60%
2018-01	95	35	37%	60	63%
2018-06	13	8	62%	5	38%
2018-09	35	11	31%	24	69%

### 2013-2017 CE Converted

Pre-College Art Studio Program	2013	2014	2015	2016	2017
Attended	50	53	45	41	29
Seniors	29	32	24	28	16
Converted	9	7	4	3	5
% to TTL Seniors	58%	60%	53%	68%	55%
% Seniors Converted	31%	22%	17%	11%	25%
% Converted	18%	13%	9%	7%	17%

## DEVELOPMENT

### 2007-2018 Development Revenues

